

# MONTHLY MEMBERSHIP PROGRESS REPORT

LOCATION INDIA

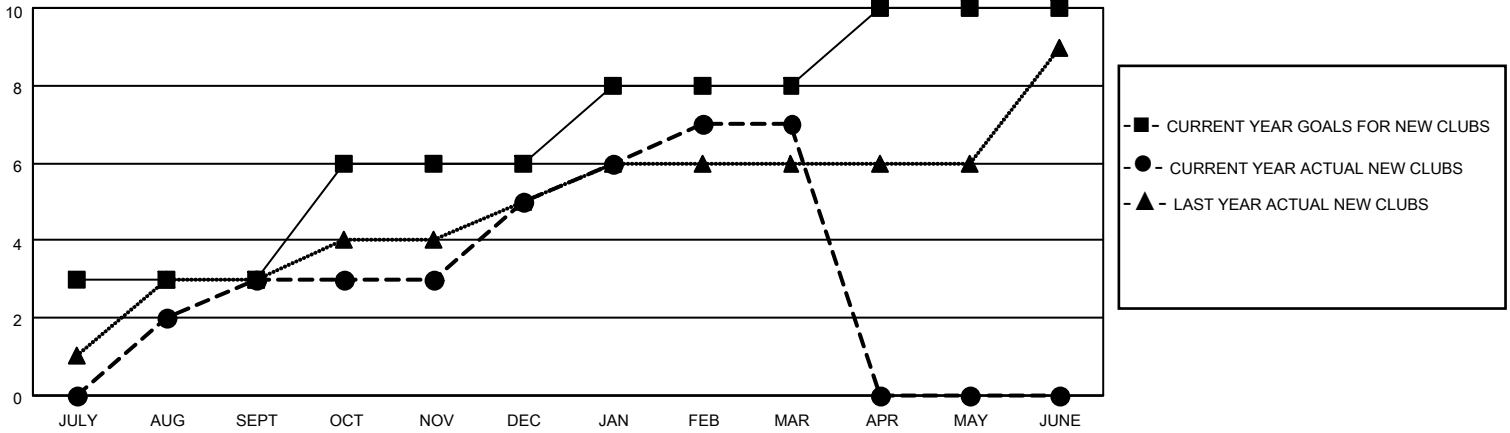
District 321C1

Results as of: 3/31/2023

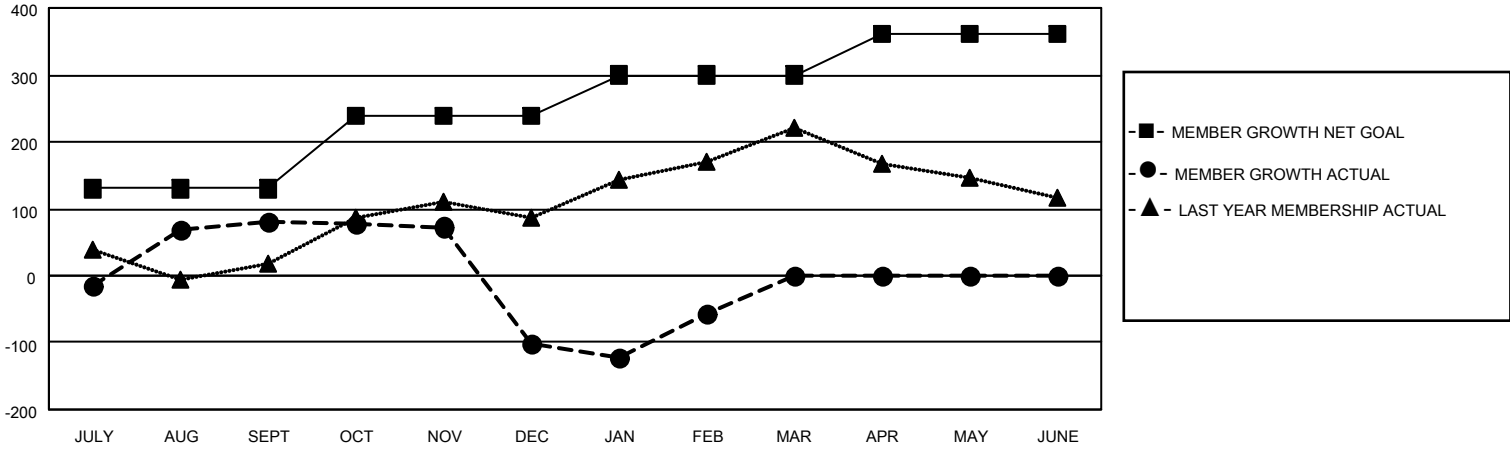
Clubs			
RESULTS FOR 2022-2023			
QUARTER	NEW CLUB GOAL	NEW CLUBS	DROPPED CLUBS
JULY/AUG/SEPT	3	3	0
OCT/NOV/DEC	3	2	6
JAN/FEB/MAR	2	2	5
APR/MAY/JUNE	2	0	0

Members			
RESULTS FOR 2022-2023			
QUARTER	MEMBER GROWTH NET GOAL	MEMBER GROWTH ACTUAL	DROPPED MEMBERS ACTUAL (including transfers)
JULY/AUG/SEPT	130	187	98
OCT/NOV/DEC	110	81	260
JAN/FEB/MAR	60	269	106
APR/MAY/JUNE	60	0	0

**GOALS AND ACTUAL NEW CLUBS CUMULATIVE**



**GOALS AND ACTUAL MEMBERS CUMULATIVE**



**DROPPED CLUBS: 11**

**70 CLUBS OF 159 ADDED 1 OR MORE NEW MEMBERS**

**GENDER DISTRIBUTION**

MALE	3,138 (67.27%)
FEMALE	1,524 (32.67%)
NON BINARY	0 (0.00%)
PREFER NOT TO ANSWER	3 (0.06%)

**DROPPED MEMBERS**

[CLICK HERE FOR CUMULATIVE MEMBERSHIP DATA](#)

DECEASED	8
CLUB CANCELLED	118
OTHER	338
<b>TOTAL</b>	<b>464</b>

TOTAL FAMILY UNIT MEMBERS 2,353

FAMILY MEMBERS PAYING HALF DUES 1,263